

Carton Boxes

Spaghetti
 16oz
 Barcode: 860011374275
 Number of Packs: 20 packs x 16oz
 Net Weight: 20 LB

20oz
 Barcode: 860012268450
 Number of Packs: 16 packs x 20oz
 Net Weight: 20 LB

Thin Spaghetti
 16oz
 Barcode: 850069150297
 Number of Packs: 20 packs x 16oz
 Net Weight: 20 LB

20oz
 Barcode: 860012268467
 Number of Packs: 16 packs x 20oz
 Net Weight: 20 LB

Rotini
 16oz
 Barcode: 860012268474
 Number of Packs: 20 packs x 16oz
 Net Weight: 20 LB

20oz
 Barcode: 860012268481
 Number of Packs: 16 packs x 20oz
 Net Weight: 20 LB

Penne Rigate
 16oz
 Barcode: 860011374268
 Number of Packs: 20 packs x 16oz
 Net Weight: 20 LB

20oz
 Barcode: 860012268498
 Number of Packs: 16 packs x 20oz
 Net Weight: 20 LB

Shells
 16oz
 Barcode: 850069150006
 Number of Packs: 20 packs x 16oz
 Net Weight: 20 LB

20oz
 Barcode: 850069150013
 Number of Packs: 16 packs x 20oz
 Net Weight: 20 LB

Elbow
 16oz
 Barcode: 860011374282
 Number of Packs: 20 packs x 16oz
 Net Weight: 20 LB

20oz
 Barcode: 850069150020
 Number of Packs: 16 packs x 20oz
 Net Weight: 20 LB

Special packaging, dimensions, and ingredient mix are available upon request

Polypropylene Bags

Fiocchi
 16oz
 Barcode: 850069150105
 Number of Packs: 20 packs x 16oz
 Net Weight: 20 LB

20oz
 Barcode: 850069150112
 Number of Packs: 20 packs x 20oz
 Net Weight: 25 LB

Vermicelli
 16oz
 Barcode: 850069150129
 Number of Packs: 20 packs x 16oz
 Net Weight: 20 LB

20 OZ
 Barcode: 850069150136
 Number of Packs: 20 packs x 20oz
 Net Weight: 25 LB

Pipe
 16oz
 Barcode: 850069150204
 Number of Packs: 20 packs x 16oz
 Net Weight: 20 LB

20oz
 Barcode: 850069150211
 Number of Packs: 20 packs x 20oz
 Net Weight: 25 LB

Orzo
 16oz
 Barcode: 850069150228
 Number of Packs: 20 packs x 16oz
 Net Weight: 20 LB

20oz
 Barcode: 850069150235
 Number of Packs: 20 packs x 20oz
 Net Weight: 25 LB

Small Rings
 16oz
 Barcode: 850069150143
 Number of Packs: 20 packs x 16oz
 Net Weight: 20 LB

20oz
 Barcode: 850069150150
 Number of Packs: 20 packs x 20oz
 Net Weight: 25 LB

Special packaging, dimensions, and ingredient mix are available upon request

Polypropylene Bags

Rotini
 16oz
 Barcode: 850069150327
 Number of Packs: 20 packs x 16oz
 Net Weight: 20 LB

20oz
 Barcode: 850069150334
 Number of Packs: 20 packs x 20oz
 Net Weight: 25 LB

Penne Rigate
 16oz
 Barcode: 850069150303
 Number of Packs: 20 packs x 16oz
 Net Weight: 20 LB

20oz
 Barcode: 850069150310
 Number of Packs: 20 packs x 20oz
 Net Weight: 25 LB

Snails
 16oz
 Barcode: 850069150266
 Number of Packs: 20 packs x 16oz
 Net Weight: 20 LB

20oz
 Barcode: 850069150273
 Number of Packs: 20 packs x 20oz
 Net Weight: 25 LB

Elbow
 16oz
 Barcode: 850069150341
 Number of Packs: 20 packs x 16oz
 Net Weight: 20 LB

20oz
 Barcode: 850069150358
 Number of Packs: 20 packs x 20oz
 Net Weight: 25 LB

Special packaging, dimensions, and ingredient mix are available upon request



Regina
PASTA

THE GREAT TASTE

Head Office:
1229, El Sheikh Aly Gad El Haq,
Florida Tower, Sheraton Heliopolis,
Cairo- Egypt
Tel.: (+202) 226 984 01/2

USA Office:
6635 Florence Avenue, Bell Gardens
California, USA
E-mail: USA@pastaregina.com
Tel.: +1 347-967-9851

Factories:
Regina Pasta Factories and Regina Mill:
Industrial Area District 2
Sadat City, El Monufia, Egypt
P.O Box: 10 Sadat City, Code: 32897.

E-mail: exports@pastaregina.com
 Hotline: 19574 | Landline: +20482656025/167
 Export department: (+2) 012 803 596 24 - (+2) 012 019 910 31
www.pastaregina.com

[f](#)
[i](#)
[d](#)
[v](#)
[in](#)

2A³
BC¹

Special packaging, dimensions, and ingredient mix are available upon request

Special packaging, dimensions, and ingredient mix are available upon request

Special packaging, dimensions, and ingredient mix are available upon request

Special packaging, dimensions, and ingredient mix are available upon request



R1
Spaghettini
12 mm



R2
Spaghettini
14 mm



R3
Spaghetti
16 mm



R4
Spaghetti
2 mm



R5
Linguini



R6
Rice

R7
Star



R8
Alphabet &
Numbers

R9
Vermicelli
1 mm



R10
Small Rings
6 mm

R11
Big Rings
10 mm



R12
Mini Rings
3 mm

R13
Lahlooba
10 mm



R14
Elbow



R15
Farfalle



R16
Fiocchi



R17
Penne
10 mm



R18
Rigatoni



R19
Rotini



R20
Fusilli



R21
Spiral



R22
Twist



R23
Snails



R24
Pipe



R25
Shells

**FINEST
QUALITY
PASTA**

Durum Wheat Mill

Regina mills run the only semolina milling facility in Egypt with all Italian state of the art cleaning and milling equipment, adhering to the best international standards.

Facility Overview: | Warehouse:

- a) Four storage silos with a capacity of **20,000 tons**.
- b) Finished product with a capacity of **10,000 tons / month** of the finest quality 100% pure durum wheat semolina.
- c) Finished product with the capacity of **120,000 tons / year**.

Pasta Facility:

Regina pasta facilities feature 7 pasta production lines, 4 of which are for short pasta and 3 are for long pasta.

Facility Overview:

- a) Machinery type: **Buhler and Fava**.
- b) Total short lines capacities: **7,500 tons / month**.
- c) Total long lines capacities: **7,500 tons / month**.

Carton Facility:

The facility provides flexibility to produce a high variety of cartons of different quality, shapes and sizes; as well as single and double layered to meet clients' specifications.

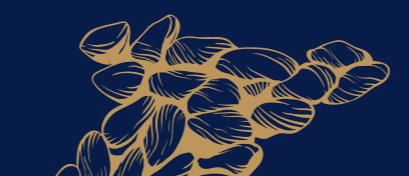
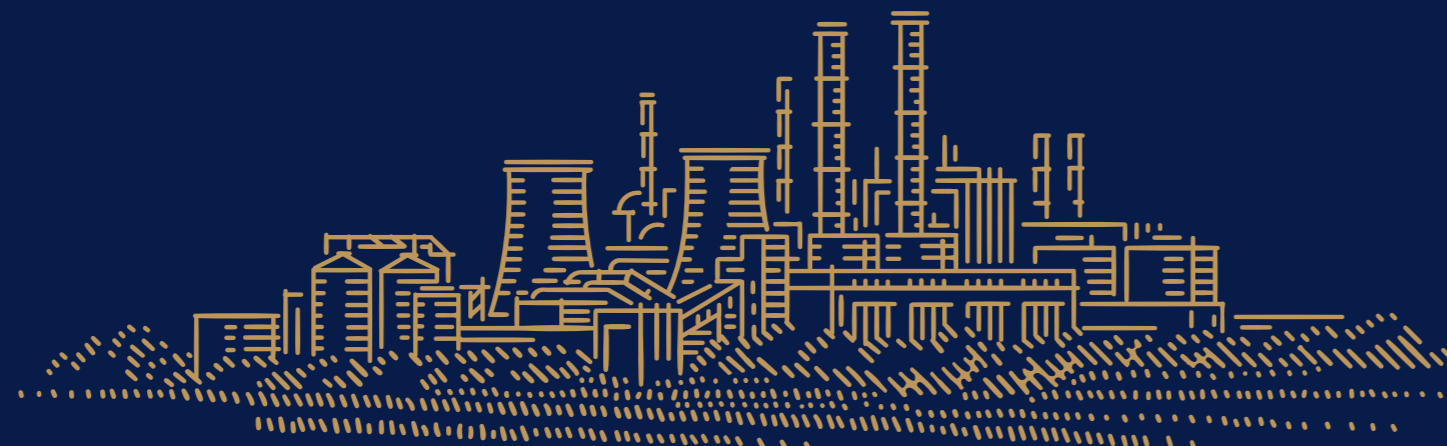
Facility Overview: | Warehouse:

- a) Raw material with a capacity of **2,000 tons**.
- b) Finished product with a capacity of **300 tons**.

16oz Pillow Pack

Nutrition Facts	
8 servings per container	
Serving size 2.0 ounce	
Amount per serving	
Calories	200
% Daily Value*	
Total Fat 1g	1%
Saturated Fat 0g	0%
Trans Fat 0g	
Polyunsaturated Fat 0g	
Monounsaturated Fat 0g	
Cholesterol 0mg	0%
Sodium 0mg	0%
Total Carbohydrate 41g	15%
Dietary Fiber 2g	7%
Total Sugars 0g	
Includes 0g Added Sugars	0%
Protein 7g	
Vitamin D	0%
Calcium 0mg	0%
Iron 2mg	10%
Potassium 112mg	2%

*The % Daily Value (DV) tells you how much a nutrient in a serving of food contributes to a daily diet. 2,000 calories a day is used for general nutrition advice.



Regina
Pasta | Lasagne



THE GREAT TASTE



The U.S.A FDA Registration no.: 14180946714